

Mastering Biblical Greek

LESSONS



Published & distributed by: **BTE MINISTRIES**
The Bible Translation and Exegesis Institute of America

This course is designed and produced by:

BTE MINISTRIES
The Bible Translation and Exegesis Institute of America

The materials contained in this course
may not be reproduced in any way,
or stored in any storage or retrieval system,
or transmitted in any form, or by any means,
electrical, photocopying, or recording,
without written permission.

~*~

www.bteministries.org

Introduction

Learning a new language involves computing the mind, much like programming a computer. We will use two important methods to teach you this language; one is the “walking” method, and the other is the “talking” method.

You will be asked to “walk” through the exercises and assignments. This will involve your personal effort to employ the three principles of learning to each lesson. The three principles of learning are: seeing (watching as you write), speaking (pronouncing each letter and syllable), and hearing (as each letter and syllable is pronounced).

In addition, we have recorded audio to “talk” you through the material. Most students of language have trouble memorizing "endings" and grammar rules. We know through experience that the best way to learn is through repetition. As you go through the lessons, you will continue to hear the syllable sounds and grammar rules reinforced over and over again. We ask you to continue on even if you feel discouraged when you are unable to understand some parts. And we encourage you to practice the exercises assigned to you and to expose yourself to the hearing of the audio as often as possible.

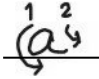
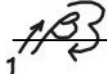
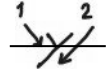
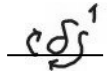
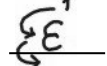
We guarantee that if you continue to expose yourself to both the auditory and written materials that **you will** learn this language. Remember, your mind is being computed to learn this language and it is our responsibility to make sure you learn it.

LESSON ONE

THE GREEK ALPHABET - Part 1

We are now going to start learning the alphabet of the Greek of the New Testament. The Greek of the New Testament is KOINE Greek. There are 24 letters in the Koine Greek alphabet – 17 consonants and 7 vowels. You will learn the name of each letter, its pronunciation, and how to write the printed form of each letter.

In this lesson you will learn one group of five (5) letters. These letters are divided and presented to help you learn the alphabet according to concept in parallel with the English alphabet.

| <u>GREEK LETTER</u> | <u>LETTER NAME</u> | <u>LETTER PRONUNCIATION</u> | <u>PRINTED FORM</u> |
|---------------------|---|-----------------------------|--|
| α | alpha (<u>A</u> Hl – phah) | “AH” as in <u>F</u> ather |  <u>α</u> |
| β | beta (<u>B</u> ay – tah) | “B” as in <u>B</u> oy |  <u>β</u> |
| γ | gamma (<u>G</u> ahm – mah) | “G” as in <u>G</u> ot |  <u>γ</u> |
| δ | delta (<u>D</u> el – tah) | “D” as in <u>D</u> og |  <u>δ</u> |
| ε | epsilon (<u>E</u> Hp – sih – lohn) | “EH” as in <u>N</u> et |  <u>ε</u> |

You now have been introduced to the first five letters of the alphabet of the Greek of the New Testament. In Exercise 1 on the next page, you will be given two diagrams to help you learn them.

LESSON ONE

EXERCISE ONE

The two diagrams in this exercise have been produced to help you to learn the first five letters of the Greek alphabet. The MEMORIZATION and PRONUNCIATION diagrams are designed to help you learn these first five letters in parallel to the English alphabet.

THE MEMORIZATION DIAGRAM for the first 5 letters:

| | | | | | |
|------------------|----------|----------|----------|----------|----------|
| GREEK ALPHABET | α | β | γ | δ | ε |
| ENGLISH ALPHABET | a | b | c | d | e |

Notice that each of the first five letters of the Greek alphabet line up with, or parallel, the first five letters of the English alphabet, except for the third letter **GAMMA (γ)** with “c.”

THE PRONUNCIATION DIAGRAM

| | | | | |
|----------|----------|-----------------------|----------|----------|
| α | β | γ | δ | ε |
| “AH” | “B” | “G” (instead of c) | “D” | “EH” |

The sounds of the letters also parallel except that the ALPHA (**α**) in Greek is pronounced “AH” and the EPSILON (**ε**) is pronounced “EH.”

You should memorize the order and pronunciation of these Greek letters before moving on to the next exercises. The easiest and quickest way to learn is to learn them in parallel to the English alphabet in the diagrams above.

LESSON 1

Page 2

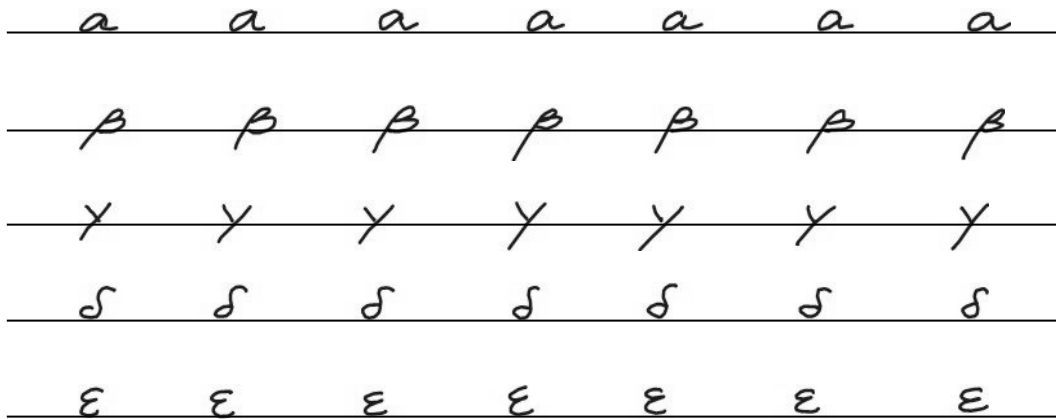
LESSON ONE

EXERCISE TWO

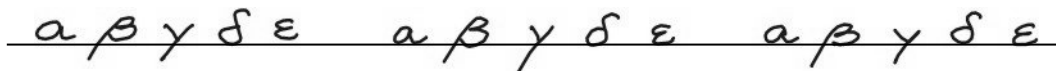
WRITING & PRONUNCIATION EXERCISES

After having studied the diagrams for the order and pronunciation of the first five letters in Exercise 1, you are ready for the writing and pronunciation exercises below.

Write each letter in printed form and at the same time verbally pronounce its name and sound. For example, the first letter will be ALPHA (**α**). Write the letter in printed form and while writing the letter say, "ALPHA, AH." You should say the name "ALPHA" when you begin to write the letter and the pronunciation "AH" during your final down stroke. Your practice paper should look like this:



After you have practiced each letter across a complete line, you should combine the letters and practice them in order, pronouncing each letter name and letter sound as you write. Your practice paper should look like this:



You should practice the above exercises until you are familiar with the name, order, and pronunciation of the first five letters of the Greek alphabet.

You are now ready to go on to pronunciation exercises.

LESSON ONE

EXERCISE TWO

WRITING & PRONUNCIATION EXERCISES

In this exercise you will be taken through the first five letters of the Greek alphabet having the letters pronounced for you. The second time through you will be given a verbal quiz in which you will be asked to respond by pronouncing the sound of the letter when you see and/or hear the letter.

| | | | | | | |
|---------|--------------------|--------------------|--------------------|--------------------|--------------------|--------------------|
| Line 1: | α Fig. 1 | β Fig. 2 | γ Fig. 3 | δ Fig. 4 | ε Fig. 5 | |
| Line 2: | β Fig. 1 | δ Fig. 2 | α Fig. 3 | ε Fig. 4 | γ Fig. 5 | δ Fig. 6 |
| Line 3: | δ Fig. 1 | ε Fig. 2 | β Fig. 3 | γ Fig. 4 | α Fig. 5 | ε Fig. 6 |
| Line 4: | γ Fig. 1 | α Fig. 2 | ε Fig. 3 | β Fig. 4 | δ Fig. 5 | α Fig. 6 |
| Line 5: | ε Fig. 1 | γ Fig. 2 | δ Fig. 3 | α Fig. 4 | β Fig. 5 | γ Fig. 6 |
| Line 6: | α Fig. 1 | β Fig. 2 | γ Fig. 3 | δ Fig. 4 | ε Fig. 5 | β Fig. 6 |
| Line 7: | β Fig. 1 | δ Fig. 2 | α Fig. 3 | ε Fig. 4 | γ Fig. 5 | δ Fig. 6 |
| Line 8: | δ Fig. 1 | ε Fig. 2 | β Fig. 3 | γ Fig. 4 | α Fig. 5 | ε Fig. 6 |

After practicing these exercises thoroughly, go on to the next set of letters in Lesson 2.

LESSON 1

Page 4